

SOUTHWEST MISSISSIPPI ELECTRIC POWER ASSOCIATION

POLE MOUNTED METER LOOP SPECIFICATIONS

PERMANENT OVERHEAD SERVICE

(Campers, RV, Etc.)

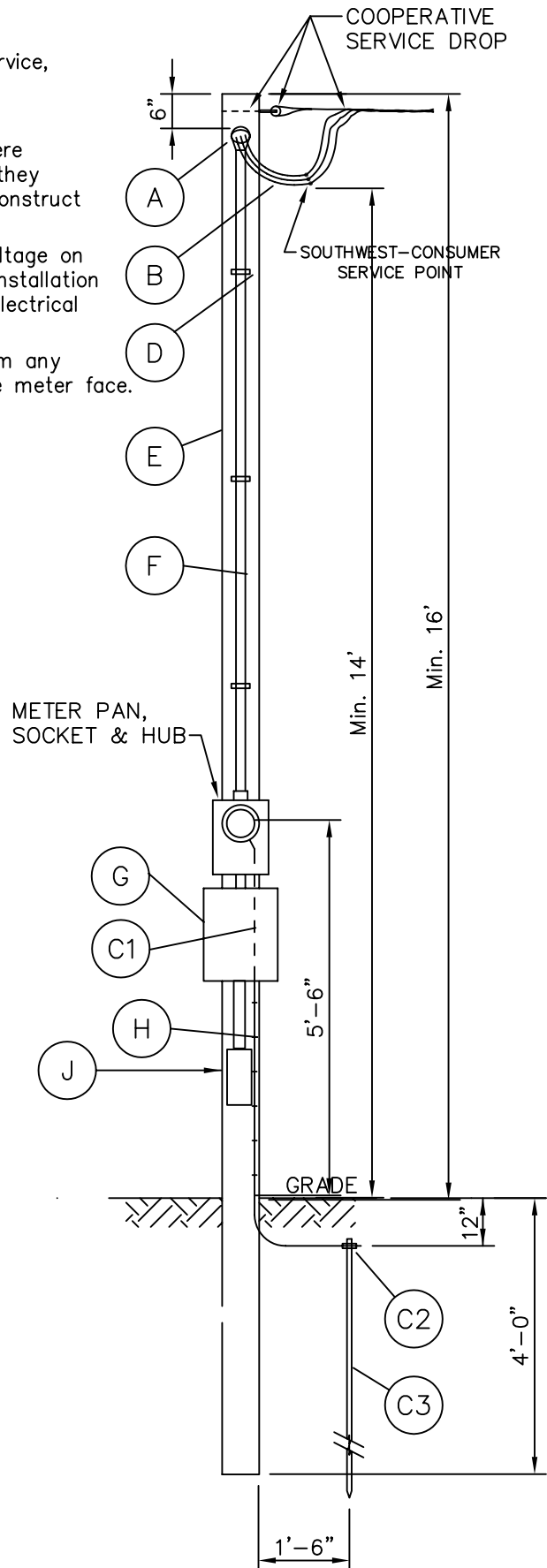
Effective July 1, 2005
Amended June 21, 2007

GENERAL REQUIREMENTS:

1. Consumer is responsible for all equipment beyond the point of service, except the meter.
2. Consumer is responsible for load capacity including future loads.
3. This drawing is illustrative of generally acceptable standards. Where National, Local, City or Community codes are more restrictive, they shall govern. It shall be the responsibility of the member to construct and maintain the electrical service in a safe manner.
4. Electrical connections to mobile homes can produce hazardous voltage on the shell of the home, appliances or other metal parts if the installation is not done properly. Use qualified electrician and install the electrical service in accordance with the National Electric Code.
5. Meter pan height shall be 5'-6" above ground and face away from any structure to ensure that the meter reader will be able to see the meter face.

Legend:

- A) Weatherhead - (Minimum 15' clearance)
- B) Service entrance conductors, copper only.
- C1) Pole grounding conductor, copper only, bare.
- C2) Ground rod clamps: Acorn type below grade recommended
- C3) Ground rod 8' long, 1/2" dia. copperweld or 5/8" dia. galv.
- D) Conduit straps: Min. 3, galv.
- E) Pole: Min. 20' long, 5" dia. top, or 6"x6" min. square pole, pressure treated crosote, penta or CCA process only.
- F) Galvanized or Sch. 80 conduit and fittings only, 10' min.
- G) Service main disconnect: Circuit breaker
- H) Staples, 6" Max. Separation
- J) Watertight Receptacle, All receptacles must be receptacles GFCI protected.
- K) NO EXPOSED CONDUCTORS LEAVING PANEL !!!



(G) Full Capacity Amperes	(B) Conductor sizes: Insulation type, 30°C ambient, THHN-Copper			Ground Wire (C1) (Min.)	Conduit (F) (Min.)
	Phase	Neutral			
100	2	2	X	6	1 1/2"
150	1/0	1/0	X	4	2"
200	2/0	2/0	X	4	2"